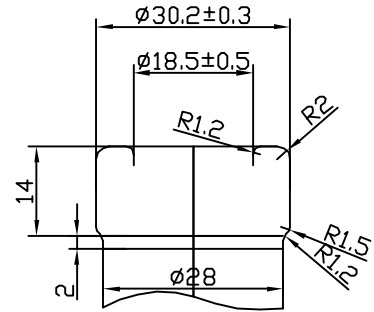
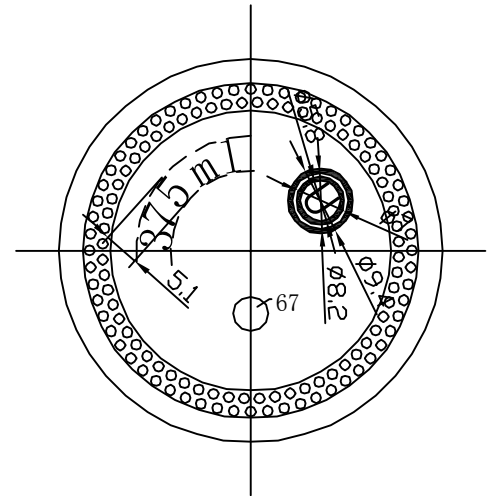


Type:
SPIRIT



1:1



The NIAGARA

Fill Point Capacity: 375ml
Brimful Capacity: $392 \pm 8 \text{ml}$

Weight: 530g

Height: $331 \text{mm} \pm 1.5 \text{mm}$

Diameter: 55.8mm

Finish: BT (VS)

Mold#: GCU-01

Date: January 25, 2010

Version 3

Changes: Removed spotting lug